

E-METRO
— LOGISTICS PARK —

POSITIONED TO LEAD



www.sdplog.com



LOGOS

E-METRO

LOGISTICS PARK

POSITIONED TO LEAD

Leveraging on the strategic partnership of Sime Darby Property, Malaysia's leading property developer, and LOGOS Property's expertise in developing world-class logistics facilities, this 177-acre freehold logistics development is envisioned to give businesses the perfect setting to grow sustainably and be well positioned to lead.



Artist's Impression Only

LEADING WITH SEAMLESS CONNECTIVITY

Strategically positioned in the heart of Bandar Bukit Raja 2 in Klang Valley just minutes from the West Coast Expressway interchange, E-Metro Logistics Park offers unrivalled connectivity via land, sea and air.

Perfectly positioned for growing businesses



Connected via 4 major expressways to the commercial heart of Malaysia - the Klang Valley.



Close to Port Klang, the second largest sea port in Southeast Asia.



International freighter flight connections via KLIA and Subang Airport.

13km to Shah Alam

15km to Port Klang

25km to Subang Airport

28km to Petaling Jaya

35km to Kuala Lumpur

60km to KLIA/ KLIA2

E-METRO LOGISTICS PARK

Legend



Airports



Seaports



Expressways

- 1 West Coast Expressway
- 2 Guthrie Corridor Expressway
- 3 North-South Expressway
- 4 Grand Sepadu Highway
- 5 New Klang Valley Expressway
- 6 Federal Highway
- 7 ELITE Highway
- 8 South Klang Valley Expressway



LEADING & GROWING SUSTAINABLY

E-Metro Logistics Park is masterplanned with long-term sustainability in mind. Surrounded by the well-established industrial eco-system of Bandar Bukit Raja, this eco-friendly logistics park is equipped with the right essentials that enable businesses here to grow sustainably today and tomorrow.

E-Metro Logistics Park Green Features



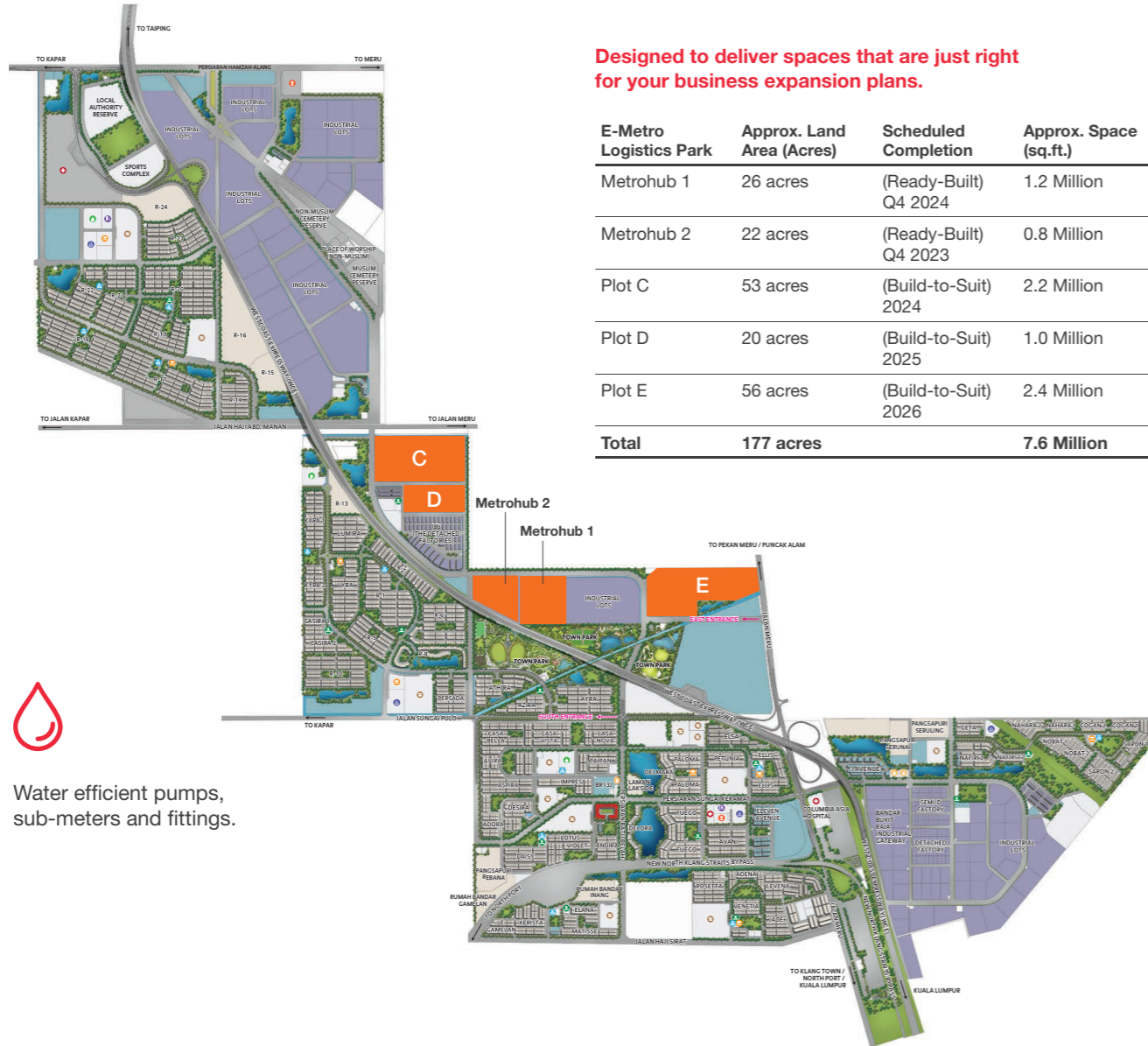
Designed with sustainability in mind (proposed LEED Gold certification).



Energy-efficient features such as solar power generation, LED lighting, enhanced thermal insulation, etc.



Water efficient pumps, sub-meters and fittings.



125-acre lush parkland within Bandar Bukit Raja.



Comprehensive amenities such as commercial hubs, healthcare, public transportation and accommodation within a 15km radius.

Bandar Bukit Raja is an award-winning masterplanned township with all the right infrastructure and amenities in place.



LEADING IN LOGISTICS



This integrated logistics park provides the perfect setting for e-commerce players, 3PL operators, freight service providers, retailers and light industrial companies to grow in.



8 million sq.ft. of prime industrial & logistics space.



Ready-built & Build-to-suit solutions.

Development Vision

Approx. 8 million sq.ft. of space to cater to the growing demand for quality industrial & logistics facilities.

To provide sustainable & integrated logistics solutions – Ready-Built & customised Build-to-Suit facilities.

Designed for operational efficiency & automation adaptability.

Emphasis on sustainability with green building certification targets.



LEADING WITH WORLD-CLASS FACILITIES

Gain the competitive edge by positioning your business within this state-of-the-art logistics park. Envisioned with reliable utilities infrastructure and world-class facilities that enhance efficiency, E-Metro Logistics Park is where your business will be well positioned to lead.



Equipped with essential utilities infrastructure.



Vehicular traffic segregation for enhanced safety.



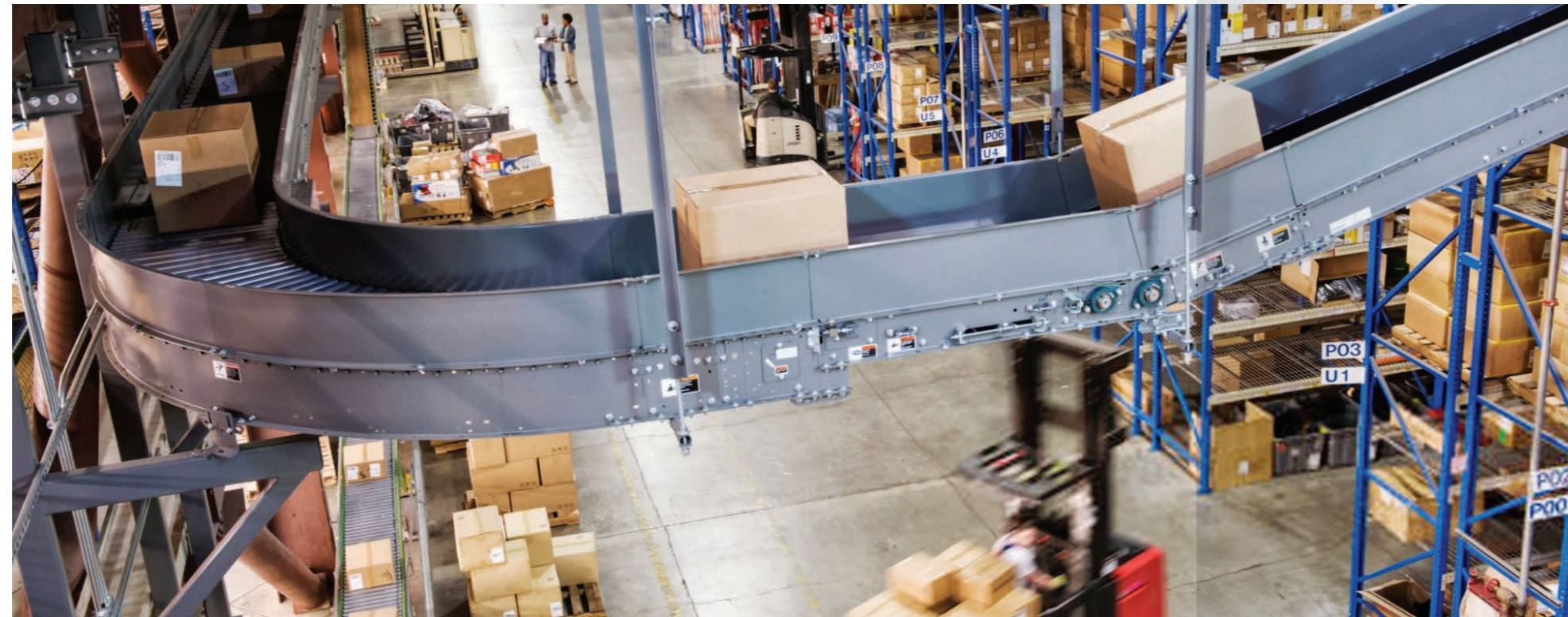
High-speed internet ready.



24-hours multi-tiered security.



Proposed cafeteria facilities.



METROHUB 1

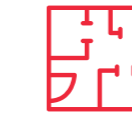


Artist's Impression Only

Metrohub 1 is the first phase of an integrated hub in E-Metro Logistics Park. Spanning 1.2 million sq. ft., this facility is envisioned to give businesses here the space to grow sustainably and be positioned to lead well into the future.

- 2-storey ready-built logistics facility with approx. 1.2 million sq.ft. of space.
- Direct access from Jalan Meru & Jalan Abdul Manan.
- Designed with sustainability in mind (proposed LEED Gold certification).
- 120ft. wide main junction road with segregated traffic management for heavy and light passenger vehicles.
- Target completion in Q4 2024.

Development Features



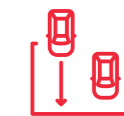
Design flexibility for subdivision of space & expansion (In configurations of approx. 100,000 sq.ft.).



Provision of utility capacity to cater for automation – 300 Amps.



Clear racking height – Level 1 (11.2m) & Level 2 (10m).



Ample carpark spaces



Floor Loading – Level 1 (3tonne/m²) & Level 2 (2.5tonne/m²).



Provision of ample loading bays and vehicular traffic segregation for enhanced safety.



Columns grid – 11.4m x 11.4m (Level 1) & 11.4m x 22.8m (Level 2).



Advanced fire fighting provisions - NFPA standards, ESFR sprinkler system.



Ramp designed with headroom clearance of 4.75m.



Multi-tiered security (CCTV & patrols).

LAYOUT PLAN (LEVEL 1)

Warehouse with Mezzanine space
(approx. 550,000 sq.ft.)

Warehouse – approx. 470,000 sq.ft.
Mezzanine – approx. 80,000 sq.ft.

Loading Bays **128 Bays**

Column Grid **11.4m x 11.4m**

Floor Loading **30kN/m² (3ton/m²)**

Clear Racking Height **11.2m**

LEGEND

- A Heavy Vehicles Entrance/Exit
- B Guard House
- C Cafeteria & Drivers' Rest Lounge
- D Sales Gallery
- E Circular Ramp
- F TNB Sub-station
- G Staircase
- H EV Charging Stations
- Ample Provision of Loading Bays
- Service Cores/Lifts
- Carpark
- Trucks Temporary Parking
- ↑ Light Vehicles Entrance/Exit
- ↑ Heavy Vehicles Only



LAYOUT PLAN (LEVEL 2)

Warehouse with Mezzanine space
(approx. 511,200 sq.ft.)

Warehouse – approx. 505,000 sq.ft.
Mezzanine – approx. 6,200 sq.ft.

Loading Bays **62 Bays**

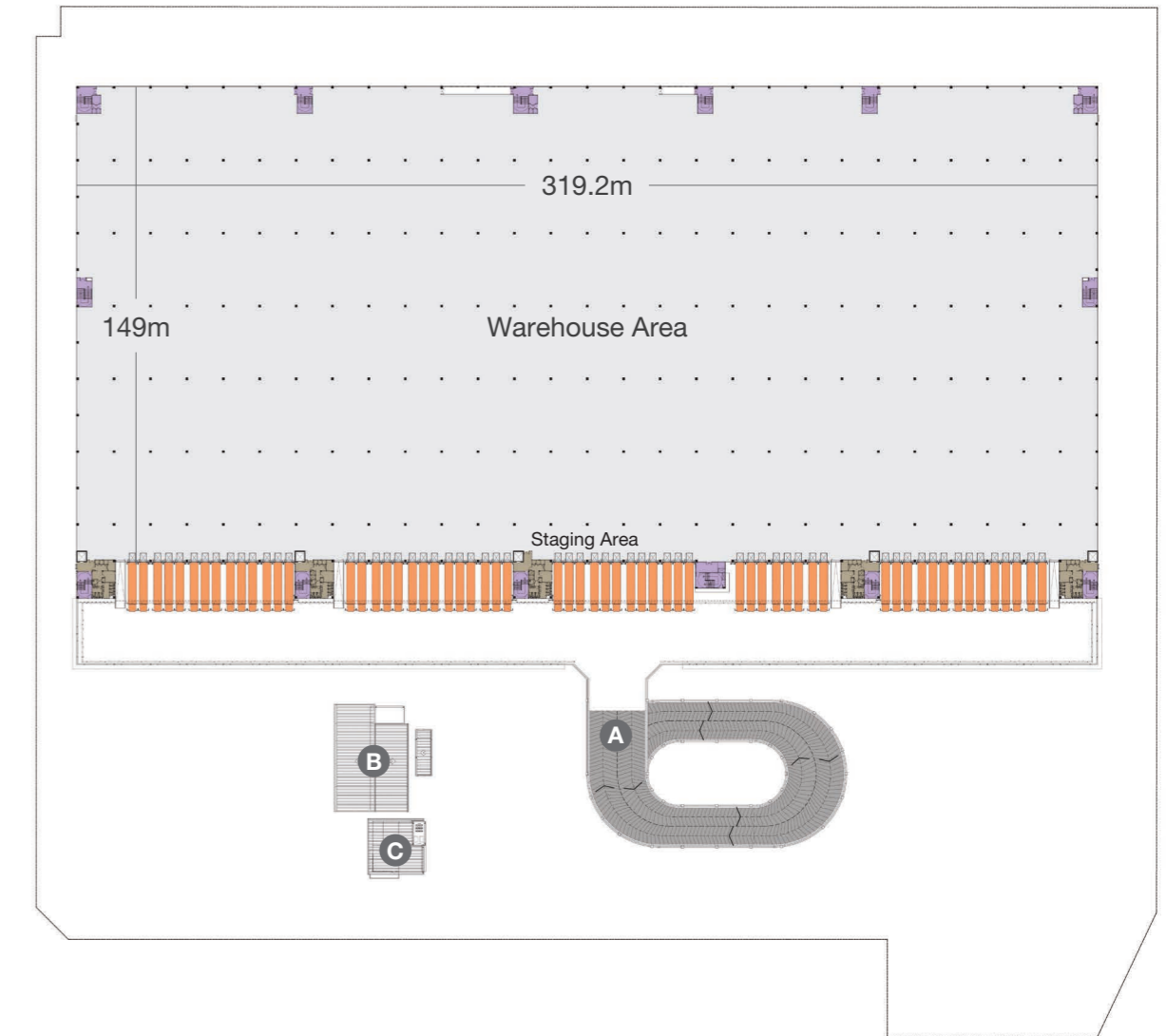
Column Grid **11.4m x 22.8m**

Floor Loading **25kN/m² (2.5ton/m²)**

Clear Racking Height **10m**

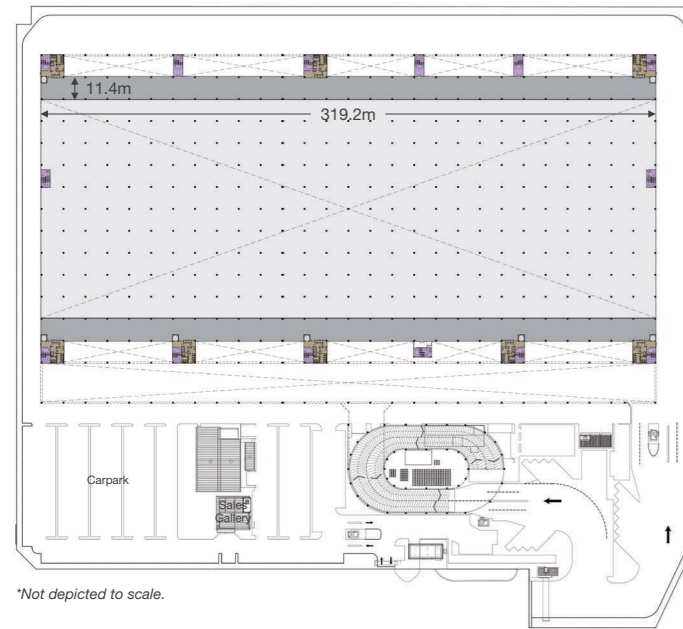
LEGEND

- A Ramp to Level 2
- B Cafeteria & Drivers' Rest Lounge
- C Sales Gallery
- Ample Provision of Loading Bays
- Service Cores/Lifts
- Staircase



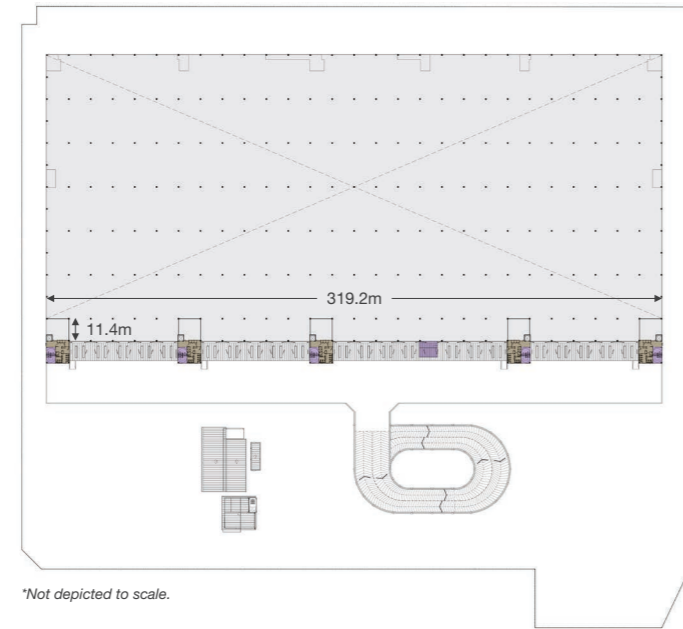
LAYOUT PLAN (MEZZANINE LEVEL)

Level 1 (Mezzanine) - Approx. 80,000 sq.ft.



Floor Loading	5kN/m ² (0.5ton/m ²)
Height	5.5m

Level 2 (Mezzanine) - Approx. 6,200 sq.ft.

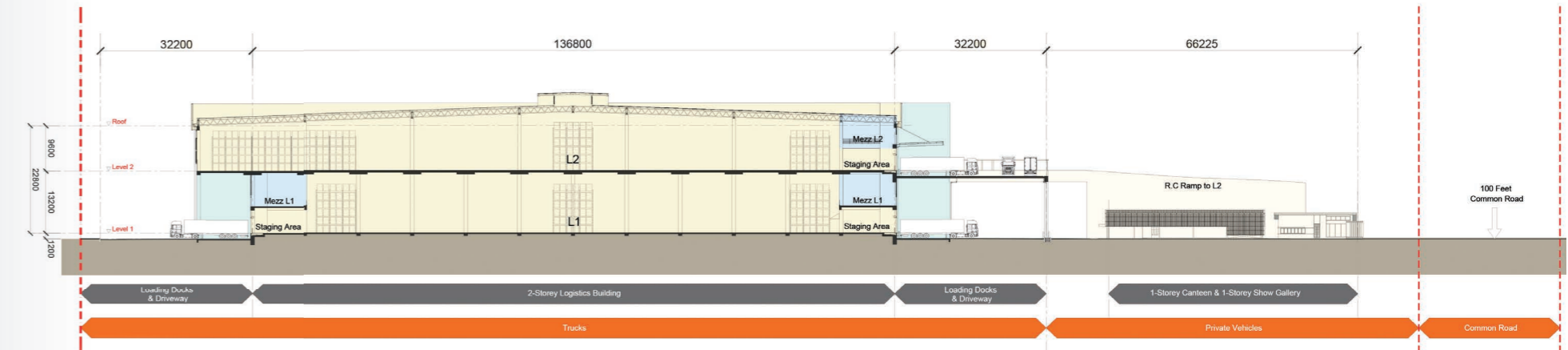


Floor Loading	5kN/m ² (0.5ton/m ²)
Height	4.5m

LEGEND

- Service Cores/Lifts
- Staircase

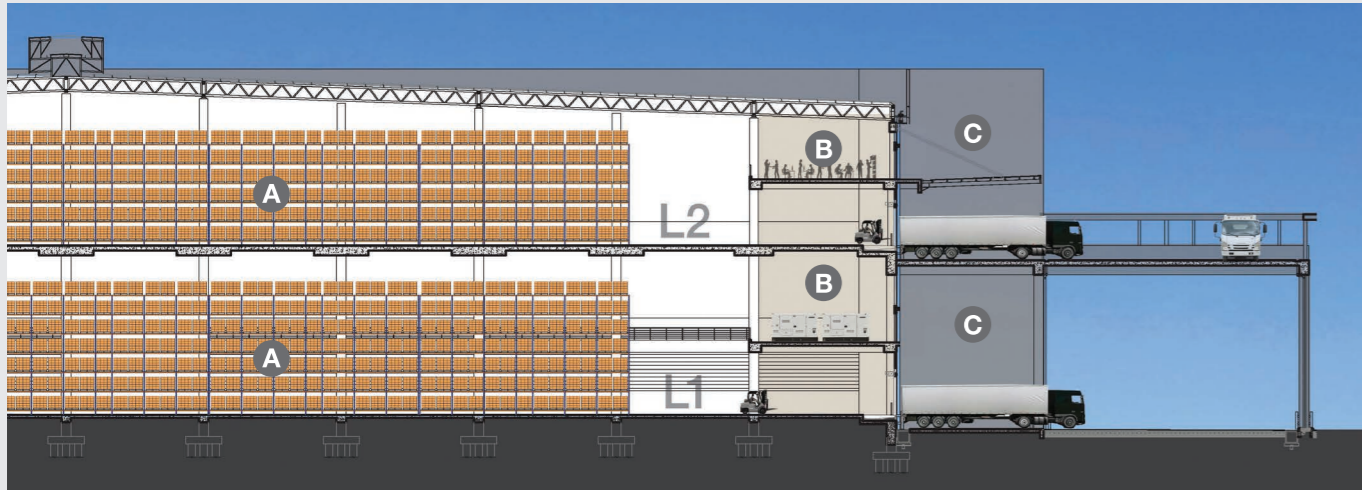
BUILDING ELEVATION



Legend

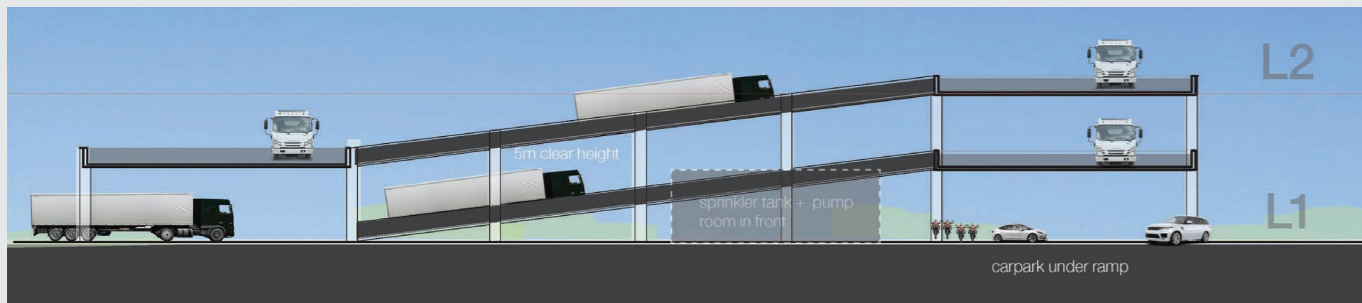
- Nature of Building & Usage
- Vehicle Separation

BUILDING ELEVATION



- A** Racking Areas
- B** Mezzanine Level
- C** Loading Bays

Sectional view of trucks access via the ramp.



PROPOSED GREEN BUILDING (SUSTAINABILITY) FEATURES

Metrohub 1



METROHUB 2



Artist's Impression Only

Metrohub 2 is designed to be a versatile, multi tenanted logistics facility consisting of 2 ready-built blocks. This state-of-the-art facility will offer 7 warehouse spaces that range from 75,000 sq.ft. to 230,000 sq.ft.

- 2 Blocks (A1 & A2) of 2-storey ready-built logistics facility with approx. 824,000 sq.ft. of space.
- Separate & guarded access to Block A1 & A2.
- Subdivision flexibility to smaller configurations - 40,000 sq.ft.
- Target completion of Metrohub 2 - Q4 2023

Development Features



Mezzanine office provision - space flexibility as office (floor loading 3.5kN/m²).



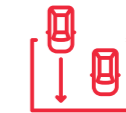
Utility capacity to cater for automation - 300Amps.



Facilities block - cafeteria, surau, parking (Approx. 5,000 sq.ft.).



Ramp access to Level 2 (12m width).



Ample carpark spaces (Approx. 500 bays).



Loading bays with dock leveller (89 bays & 17 truck parking bays).



NFPA standard, ESFR sprinkler system.



Guarded with CCTV surveillance at common areas.

Metrohub 2

Block A1
(Scheduled Completion in Q3 2023)

WH 1	233,000 sq.ft.*
WH 2	104,000 sq.ft.*
WH 3	104,000 sq.ft.*
Total	441,000 sq.ft.*

Block A2
(Scheduled Completion in Q4 2023)

WH 4	76,500 sq.ft.*
WH 5	87,000 sq.ft.*
WH 6	82,000 sq.ft.*
WH 7	93,000 sq.ft.*
Total	338,500 sq.ft.*

*Approx. Space



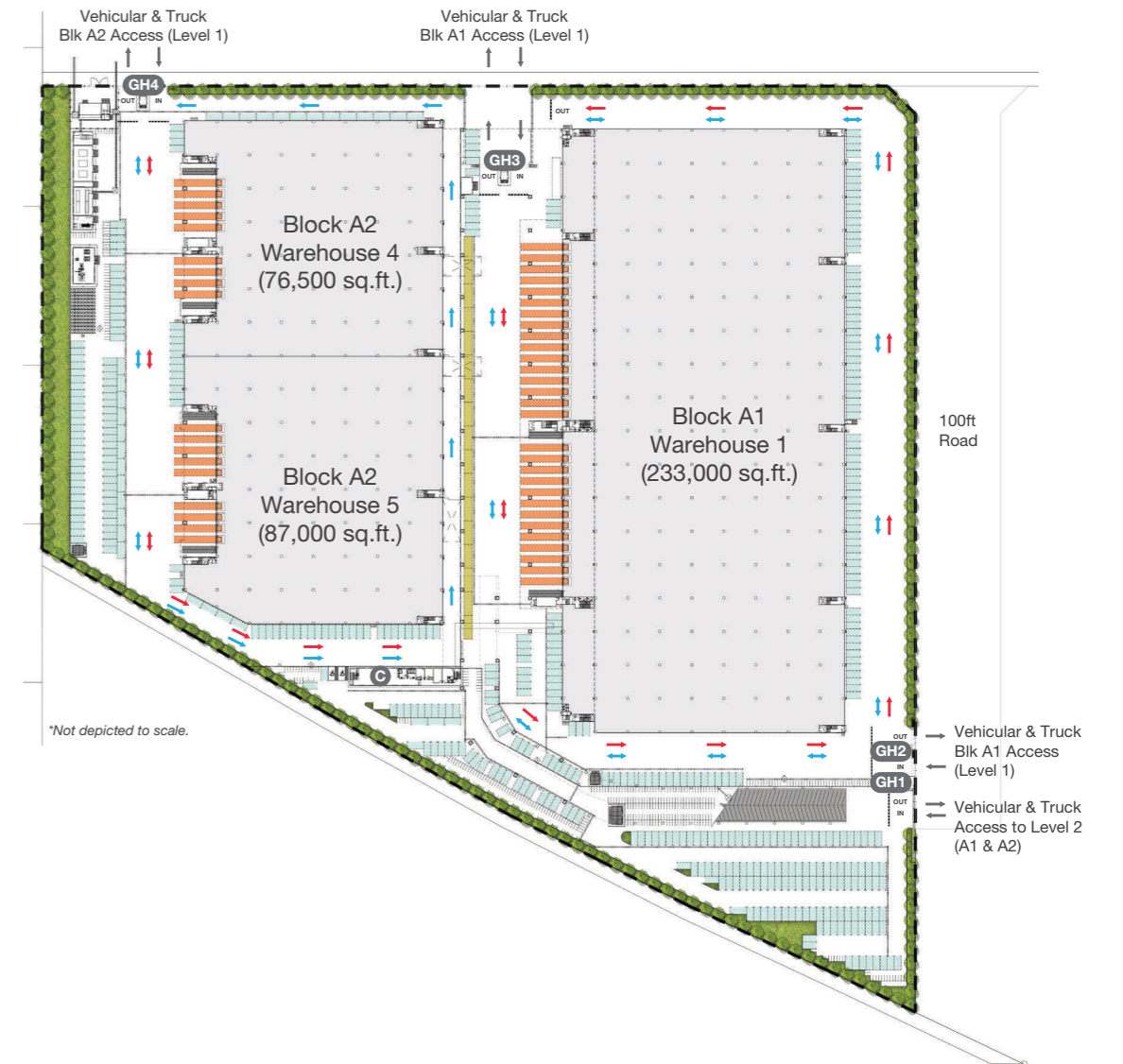
LAYOUT PLAN
(LEVEL 1)

Warehouse 1, 4 & 5
(approx. 396,500 sq.ft.)

Floor Loading	30kN/m ² (3ton/m ²)
Clear Racking Height	11.75m
Column Grid	11.5m x 12.0m
A1 - WH 1 Loading Bays - Truck Bays	29 Bays 17 Bays
A2 - WH 4 Loading Bays - WH 5 Loading Bays	9 Bays 9 Bays

LEGEND

- GH Guard House
- C Cafeteria
- Ample Provision of Loading Bays
- Truck Bays
- Outdoor Carpark
- Light Vehicles
- Heavy Vehicles



LAYOUT PLAN (LEVEL 2)

Warehouse 2, 3, 6 & 7
(approx. 383,000 sq.ft.)

Floor Loading **25kN/m² (2.5ton/m²)**

Clear Racking Height **10.6m**

Column Grid **23.0m x 12.0m**

A1 - WH 2 Loading Bays **12 Bays**

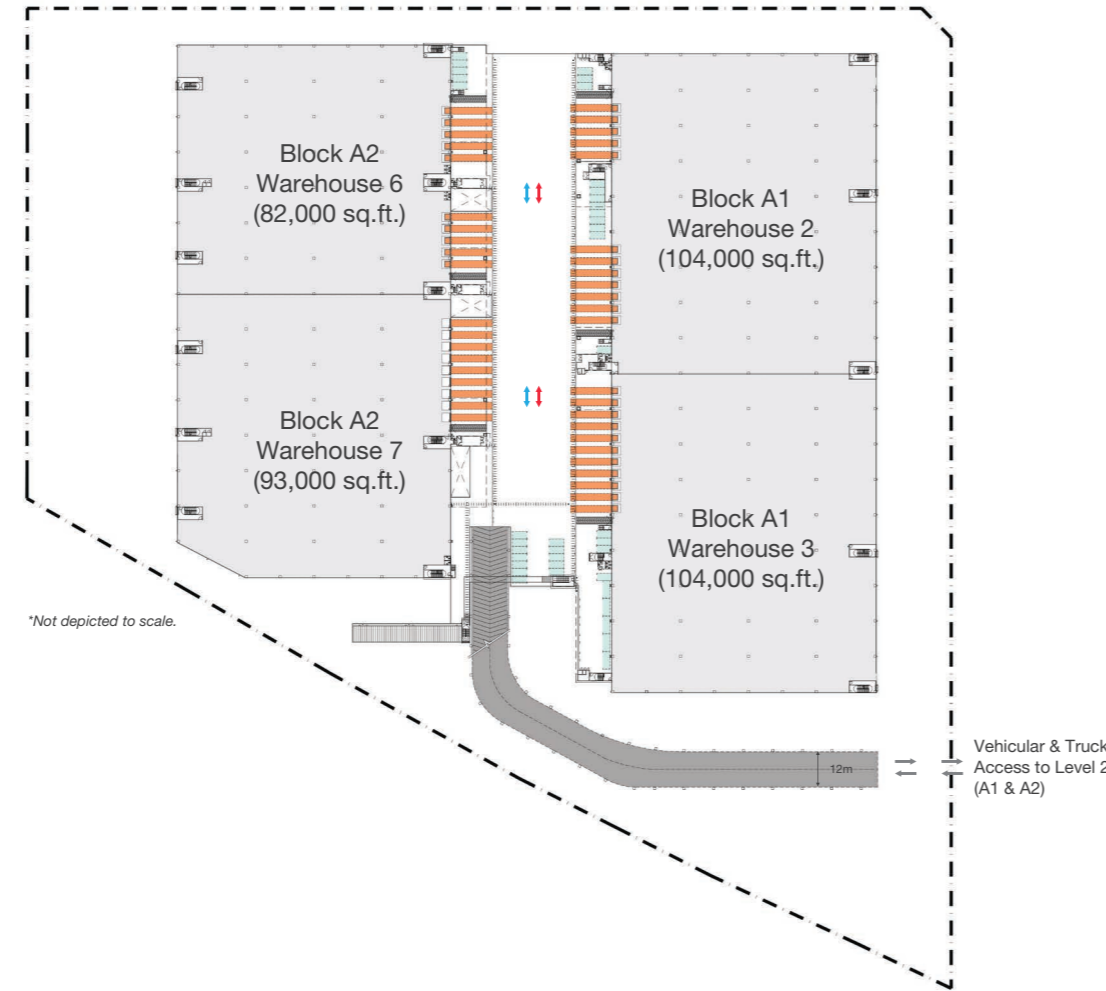
- WH 3 Loading Bays **11 Bays**

A2 - WH 6 Loading Bays **10 Bays**

- WH 7 Loading Bays **9 Bays**

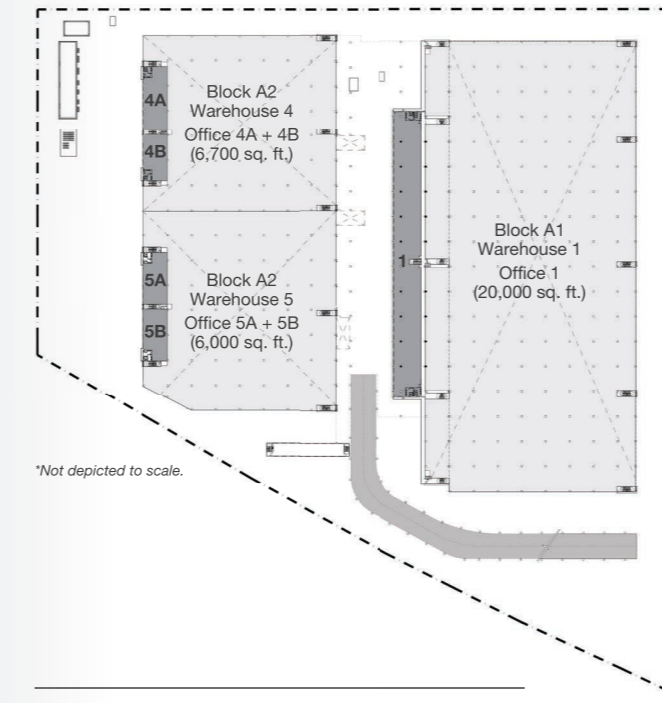
LEGEND

- Ample Provision of Loading Bays
- Outdoor Carpark
- ↑ Light Vehicles
- ↑ Heavy Vehicles



LAYOUT PLAN (MEZZANINE LEVEL)

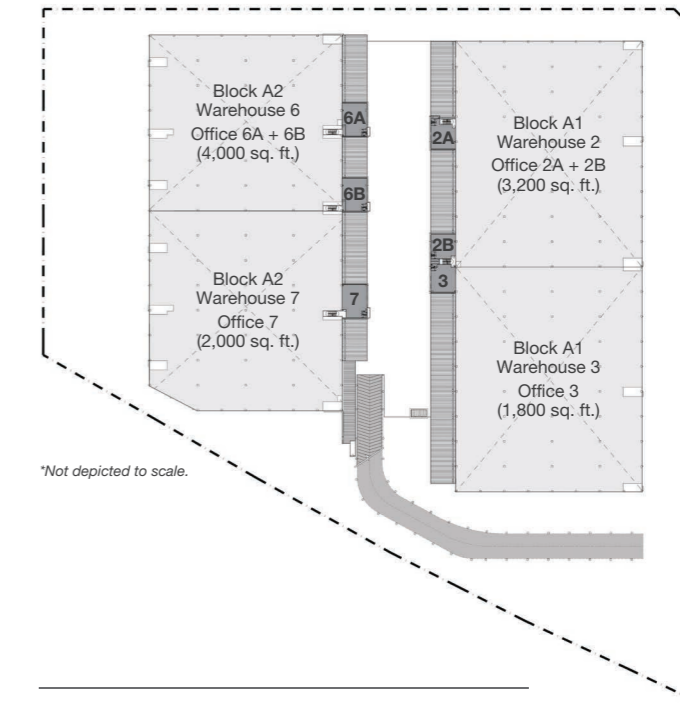
Level 1 (Mezzanine) - Approx. 32,700 sq.ft.



Floor Loading **3.5kN/m² (0.35ton/m²)**

Height **4.65m**

Level 2 (Mezzanine) - Approx. 11,000 sq.ft.

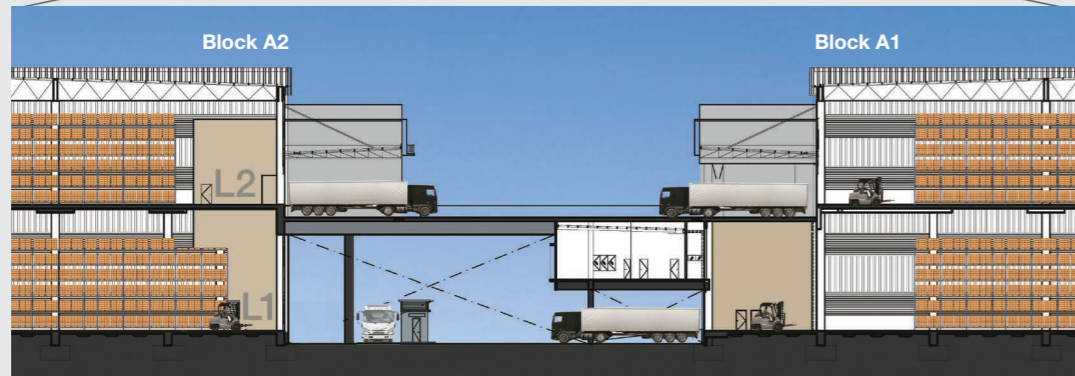
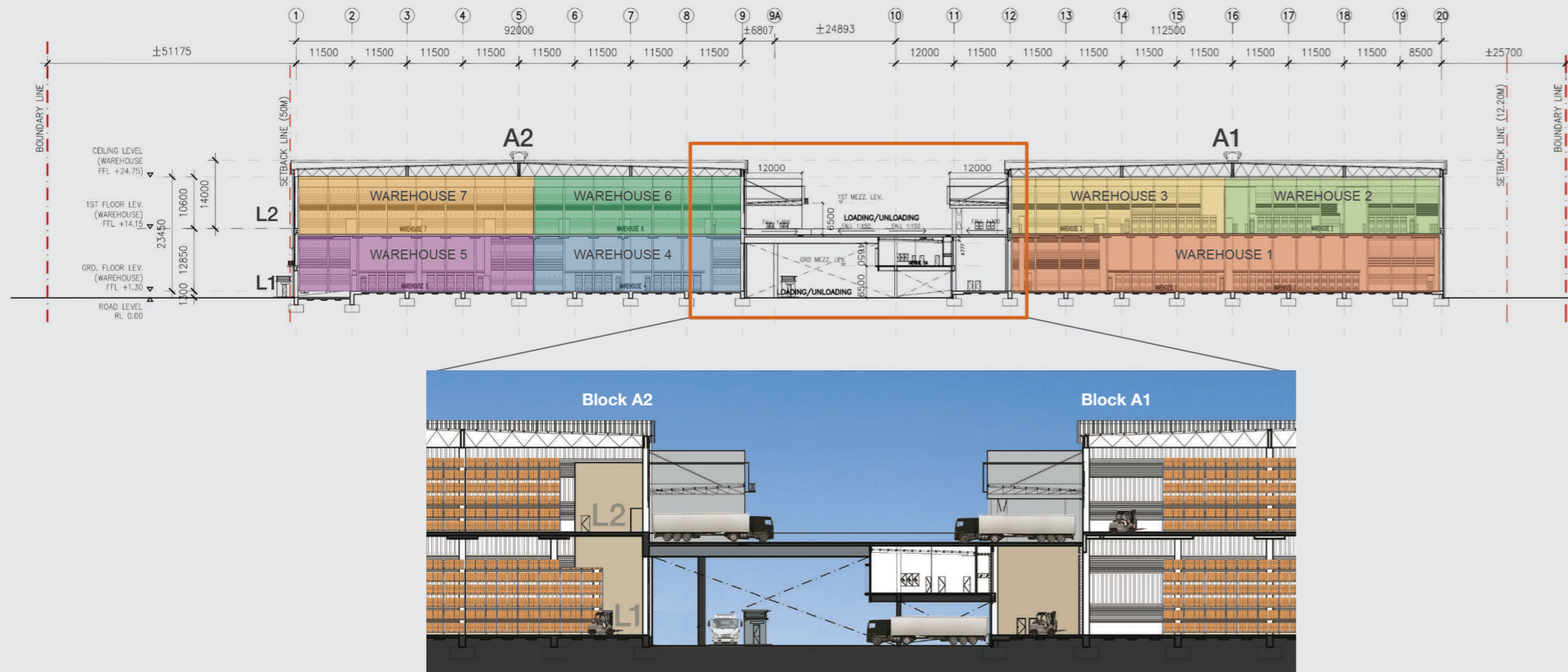


Floor Loading **3.5kN/m² (0.35ton/m²)**

Height **3.5m**

BUILDING ELEVATION

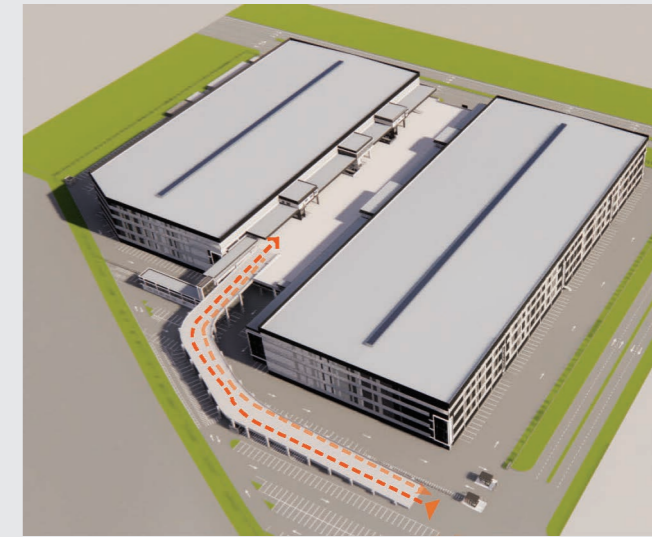
Part section between Block A1 & A2.



BUILDING ELEVATION



Ground level view



Aerial view

A SYNERGY OF LEADING DEVELOPERS

E-Metro Logistics Park is the maiden development of SDPLOG. A joint venture initiative between Sime Darby Property and LOGOS Property, SDPLOG is a synergistic fund management platform that develops and invests in world-class industrial & logistics assets within Bandar Bukit Raja 2 in Klang Valley, Malaysia.



Sime Darby Property is a leading property developer with a strong success rate of developing sustainable communities / developments, Sime Darby Property has a wide reach that encompasses assets and operations across the country. It marks its presence in the UK as part of a Malaysian consortium to develop the iconic Battersea Power Station Project in central London. As a responsible corporate player, Sime Darby Property and its philanthropic arm, Yayasan Sime Darby (YSD) actively implement various initiatives to assist underprivileged communities living within and nearby its townships. A multi award-winning property group with numerous international and local accolades, Sime Darby Property is a constituent of the MSCI ACWI Small Cap Index with MSCI ESG Rating of BBB and is rated by the Carbon Disclosure Project.

For more information, please visit simeproperty.com

LOGOS

LOGOS is a dynamic and growing logistics specialist with operations across 10 countries in Asia Pacific. LOGOS' shareholders comprise ESR Group, APAC's largest real asset manager powered by the New Economy and the third largest listed real estate investment manager globally, and its Founders, John Marsh and Trent Illiffe. LOGOS manages every aspect of logistics real estate, including investment management, sourcing land or facilities and undertaking development and asset management, on behalf of some of the world's leading global real estate investors. LOGOS has circa 98 million sq.ft. of property owned and under development, with a total completed value of over US\$19.6 billion, across 31 ventures.

For more information, please visit logosproperty.com

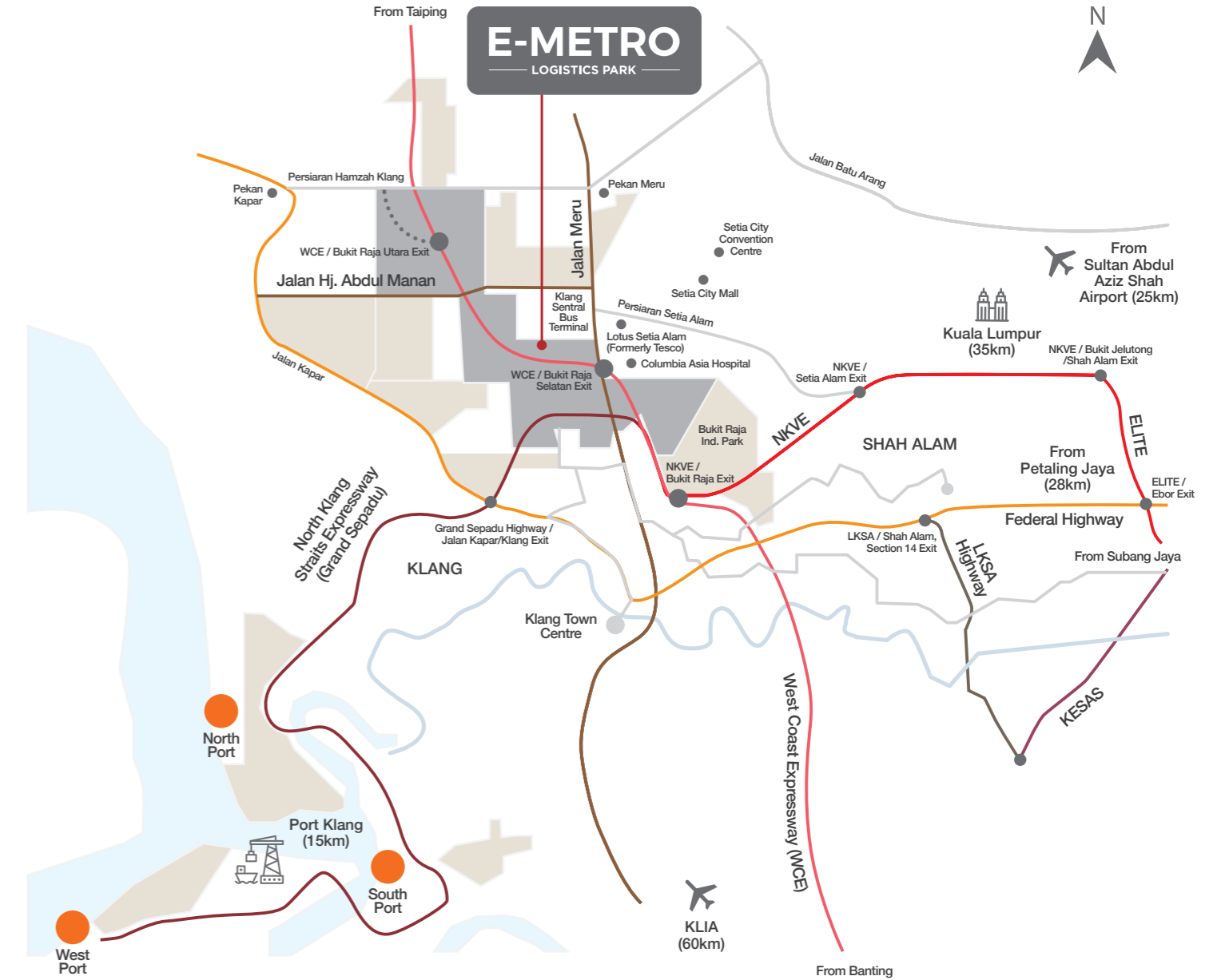
GETTING HERE

Legend

- Industrial Zones
- Bandar Bukit Raja
- Ports



E-Metro Logistics Park





Artist's Impression Only

Contact Us

For more information and enquiries, please get in touch with:

Lalitha Anandarajah
Senior Manager, Marketing & Business Development

T. +6012 330 1938
E. lalithaanandarajah@sdplog.com

Muhd Syahmi
Marketing & Business Development Executive

T. +6019 308 2711
E. muhdsyahmi@sdplog.com

The concepts and information contained in this document are the property of SDPLOG 1 (Industrial Project Management) Sdn. Bhd. 202101035514 (1435814-K) (SDPLOG). Use or copying of this document in whole or in part without the written permission of SDPLOG constitutes an infringement of copyright. To the maximum extent permitted by law, SDPLOG disclaims all liability and you expressly release SDPLOG from any liability that may otherwise arise from reliance upon this document or due to any information contained in this document being inaccurate or due to information being omitted from this document, whether by way of negligence or otherwise. SDPLOG takes no responsibility for any errors or omissions or discrepancies, if any, in this document which have been compiled from information supplied to us by various sources and are subject to withdrawal without notice. All maps and areas are approximate and are given as guidance only and all specifications and descriptions of the property are subject to final design. This document is for marketing purposes only. Interested parties should make their own enquiries. Nothing contained in this document nor any other related information made available to you is, or shall be relied upon as, a promise, representation, warranty or guarantee, whether as to the past, present or the future. Information current as at January 2023 and is subject to change.



LOGOS